

MONTHLY MEMBERSHIP PROGRESS REPORT

District 41

Results as of: 3/31/2020

GMT:

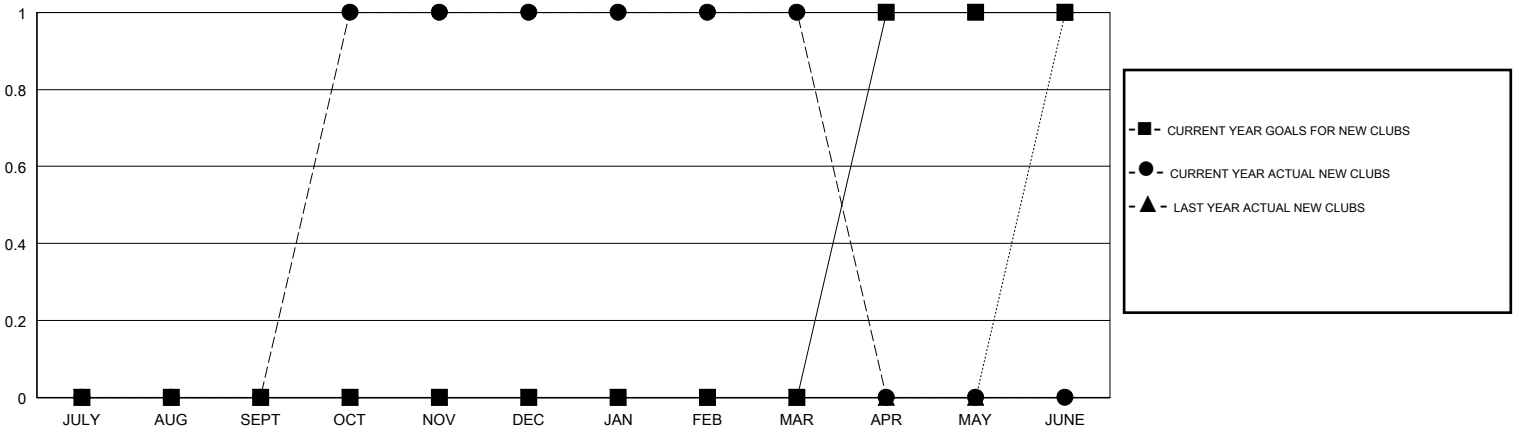
LOCATION MAINE

GMT CA

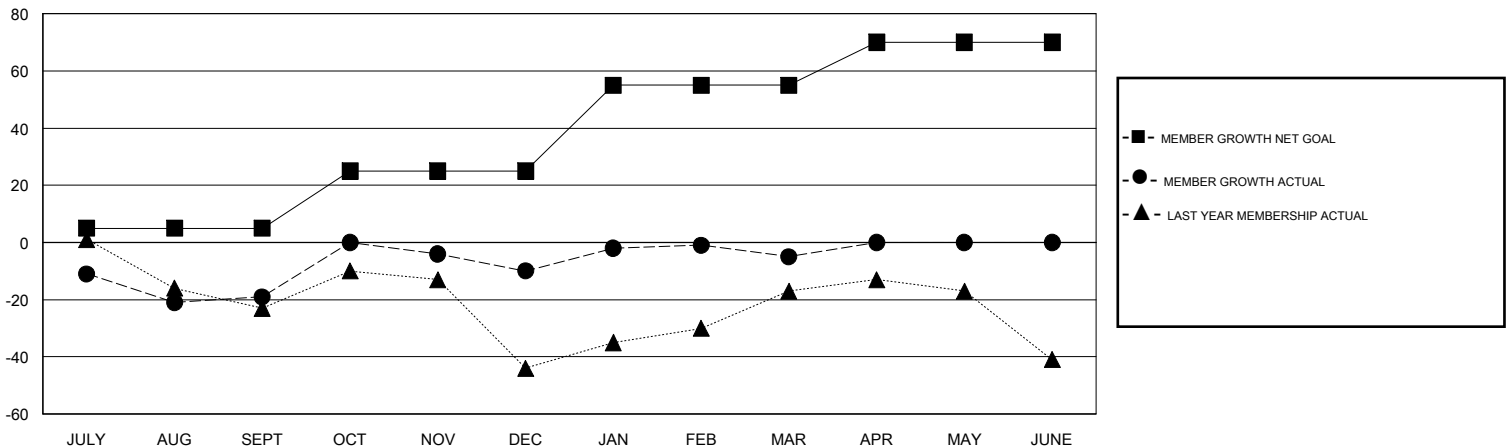
Clubs			
RESULTS FOR 2019-2020			
QUARTER	NEW CLUB GOAL	NEW CLUBS	DROPPED CLUBS
JULY/AUG/SEPT	0	0	1
OCT/NOV/DEC	0	1	0
JAN/FEB/MAR	0	0	0
APR/MAY/JUNE	1	0	0

Members			
RESULTS FOR 2019-2020			
QUARTER	MEMBER GROWTH NET GOAL	MEMBER GROWTH ACTUAL	DROPPED MEMBERS ACTUAL (including transfers)
JULY/AUG/SEPT	5	31	46
OCT/NOV/DEC	20	61	49
JAN/FEB/MAR	30	47	40
APR/MAY/JUNE	15	0	0

GOALS AND ACTUAL NEW CLUBS CUMULATIVE



GOALS AND ACTUAL MEMBERS CUMULATIVE



DROPPED CLUBS: 1	41 CLUBS OF 74 ADDED 1 OR MORE NEW MEMBERS	<u>GENDER DISTRIBUTION</u>	
DROPPED MEMBERS		MALE	1,413 (68.06%)
DECEASED	25	FEMALE	663 (31.94%)
CLUB CANCELLED	0	TOTAL FAMILY UNIT MEMBERS	490
OTHER	110	FAMILY MEMBERS PAYING HALF DUES	253
TOTAL	135		

[CLICK HERE FOR CUMULATIVE MEMBERSHIP DATA](#)